

PRODUCT INFORMATION

FOR YOUR INQUIRIES, PLEASE
INDICATE MODEL NO., AND
FOLLOWING
CATALOGUE NUMBER
SAT034

Universal Power Coupling-Greaser

Product Specifications/Features :

1. Continuous Flow
2. Fit to any kind of Electric or Pneumatic Power Tools which user owned.
3. High Pressure Performance to deliver up to :275 bar (4000 PSI)
4. Recommended RPM for tools adapted: 700 RPM ~ 4000 RPM
5. Capacity : 400cc
6. Grease Loading : Cartridge, Dispenser and Bulk loading

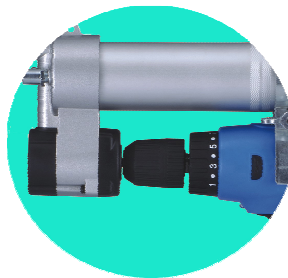
Available Power tool to drive this Coupling :

Pneumatic Drill/Screwdriver
Electric Drill/Screwdriver
Cordless Drill/Screwdriver

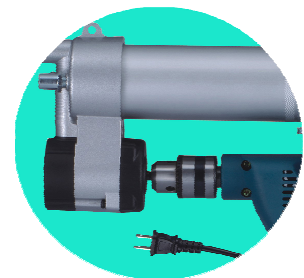
Model: AT00204



Pneumatic Drill :
3/8" & 1/2" Chuck



Cordless Drill/Screwdrive
1/4" Keyless Chuck



Electric Power Drill :
3/8" & 1/2" Chuck



HIMOUNT INDUSTRIAL CO., LTD.
7TH FL. No.325, FU HSING N. ROAD.
TAIPEI, TAIWAN
TEL: 886-2-27135577 886-2-27188886
FAX : 886-2-27152218
<http://www.himount.com/>
E - MAIL: himount@himount.com