

RECHARGEABLE

FOR YOUR INQUIRIES, PLEASE
INDICATE MODEL NO., AND FOLLOWING
CATALOGUE NUMBER

SET101

LED COB WORK LIGHT

ET521002



Bulb: COB (10W)
Material: Aluminum + Rubber
Output: 1100 Lm
Battery: #18650 3.7v/ 4400MAh
Function : 50% /100%
With Power Indicator
With USB Charging Port
Charger: 5V/1A, USB
With Pull Type Handle

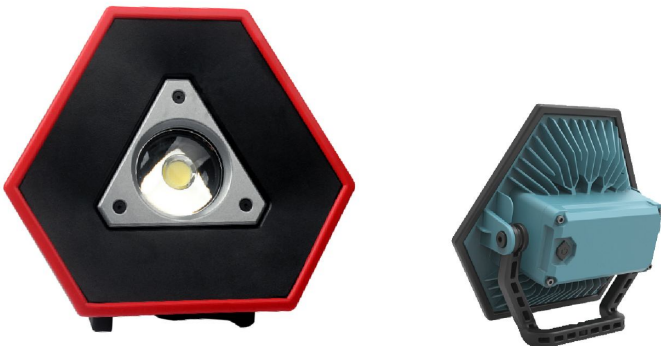


ET52100



Bulb: COB (10W)
Material: Aluminum
Output: 1100 Lm
Battery: #18650 3.7v/ 4400MAh
Function : 50% /100%
Charger: 5V/1A, USB

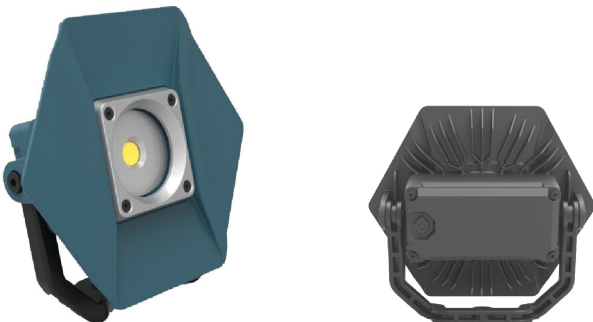
ET521004



Bulb: COB (20W)
Material: Aluminum
Output: 1800 Lm
Battery: #18650 11.1v/4400MAh
Function : 50% /100%
Charger: AC/DC adapto



ET521006



Bulb: COB (10W)
Material: ABS + PC
Output: 800 Lm
Battery: #18650 3.7v/4400MA
Function : 50% /100%
Charger: AC/DC adaptor



HIMOUNT INDUSTRIAL CO., LTD.

7TH FL. No.325, FU HSING N. ROAD.

TAIPEI, TAIWAN,

TEL: 886-2-27135577 FAX: 886-2-27152218

E - MAIL : himount@himount.com

[http:// www.himount.com](http://www.himount.com)