

PRODUCT INFORMATION

FOR YOUR INQUIRIES, PLEASE
INDICATE MODEL NO., AND FOLLOWING
CATALOGUE NUMBER

SUT064
Page 1 of 2

Multi-Functional One Hand Bar Clamp

This unique bar clamp is not only bar clamp. Special cross-holder mechanism can be jointed as one for simple vise or other woodworking. One clamp apply pressure to hold the workbench and another can be changed direction and then fixed to clamp the work piece.

Clamping Capacity: One Hand 150 kgs

Body Material: Nylon + Fiberglass

Bar Material: Carbon Steel

Jaw Material: Soft "PE"

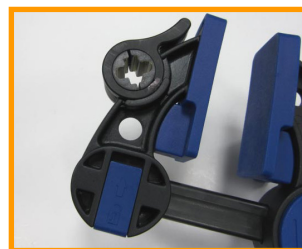
UT0986552 for 6" Clamping

UT0986554 for 12" Clamping

UT0986556 for 18" Clamping

UT0986558 for 24" Clamping

UT0986560 for 36" Clamping



Special cross-holder mechanism can be jointed as one for vise working.



One side facing down to clamp the workbench and another facing up to hold the work piece.



HIMOUNT INDUSTRIAL CO., LTD.

7TH FL. No.325, FU HSING N. ROAD.

TAIPEI, TAIWAN,

TEL: 886-2-27135577 FAX: 886-2-27152218

E - MAIL : info@himount.com

[http:// www.himount.com](http://www.himount.com)

PRODUCT INFORMATION

FOR YOUR INQUIRIES, PLEASE
INDICATE MODEL NO., AND FOLLOWING
CATALOGUE NUMBER

SUT064

Page 2 of 2

Fast Action Round Jaw Clamp

Quick action for clamping with special lever locking system.

Smooth 360-degree handle for better performance.

Unique round jaw design has more clamp capacity and accommodate to different conditions.

Clamping Capacity: 100 ~ 120 kgs

Round Jaw Size: 4" / 100 mm

Body Material: Nylon + Fiberglass, Steel Wire

Tube Material: Aluminum

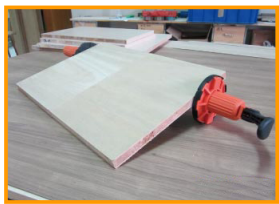
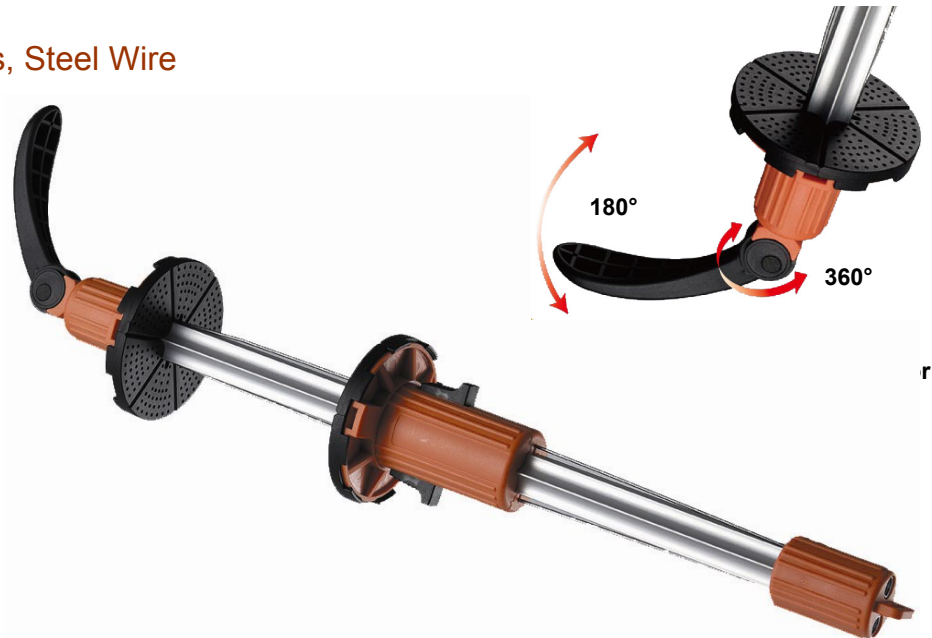
Jaw Material: Soft "PE"

UT099212 for 12" Clamping

UT099218 for 18" Clamping

UT099224 for 24" Clamping

UT099236 for 36" Clamping



Board Combination 1



Board Combination 2



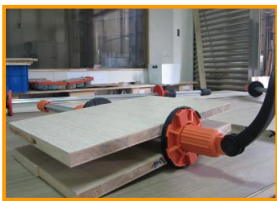
Cabinet Assembly



Tower Shape



L Shape



**Parallel Board
Combination**



General Clamping



Workbench



H Shape 1



H Shape 2



T Shape 1



T Shape 2



HIMOUNT INDUSTRIAL CO., LTD.

7TH FL. No.325, FU HSING N. ROAD.

TAIPEI, TAIWAN,

TEL: 886-2-27135577 FAX: 886-2-27152218

E - MAIL : info@himount.com

[http:// www.himount.com](http://www.himount.com)